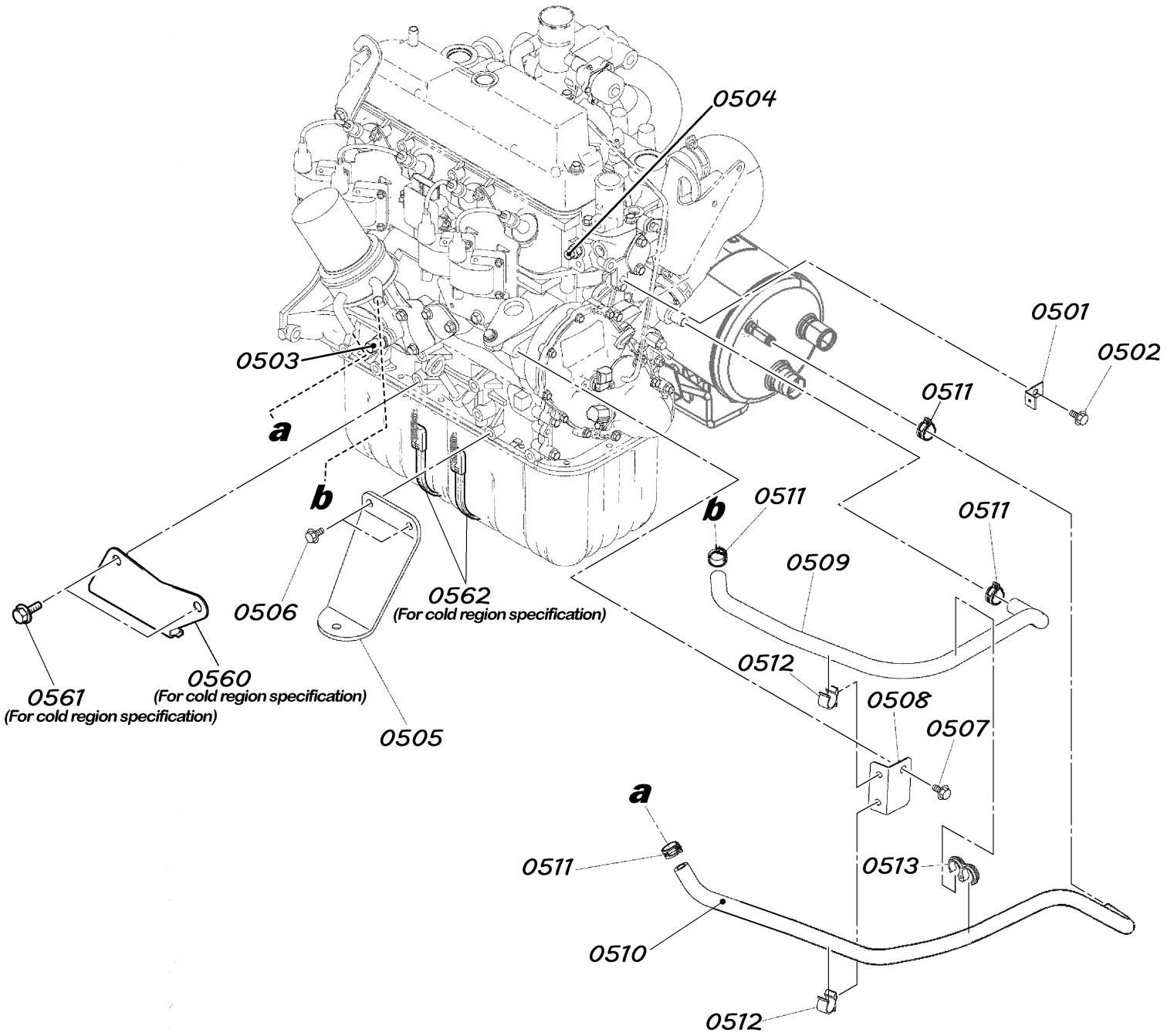
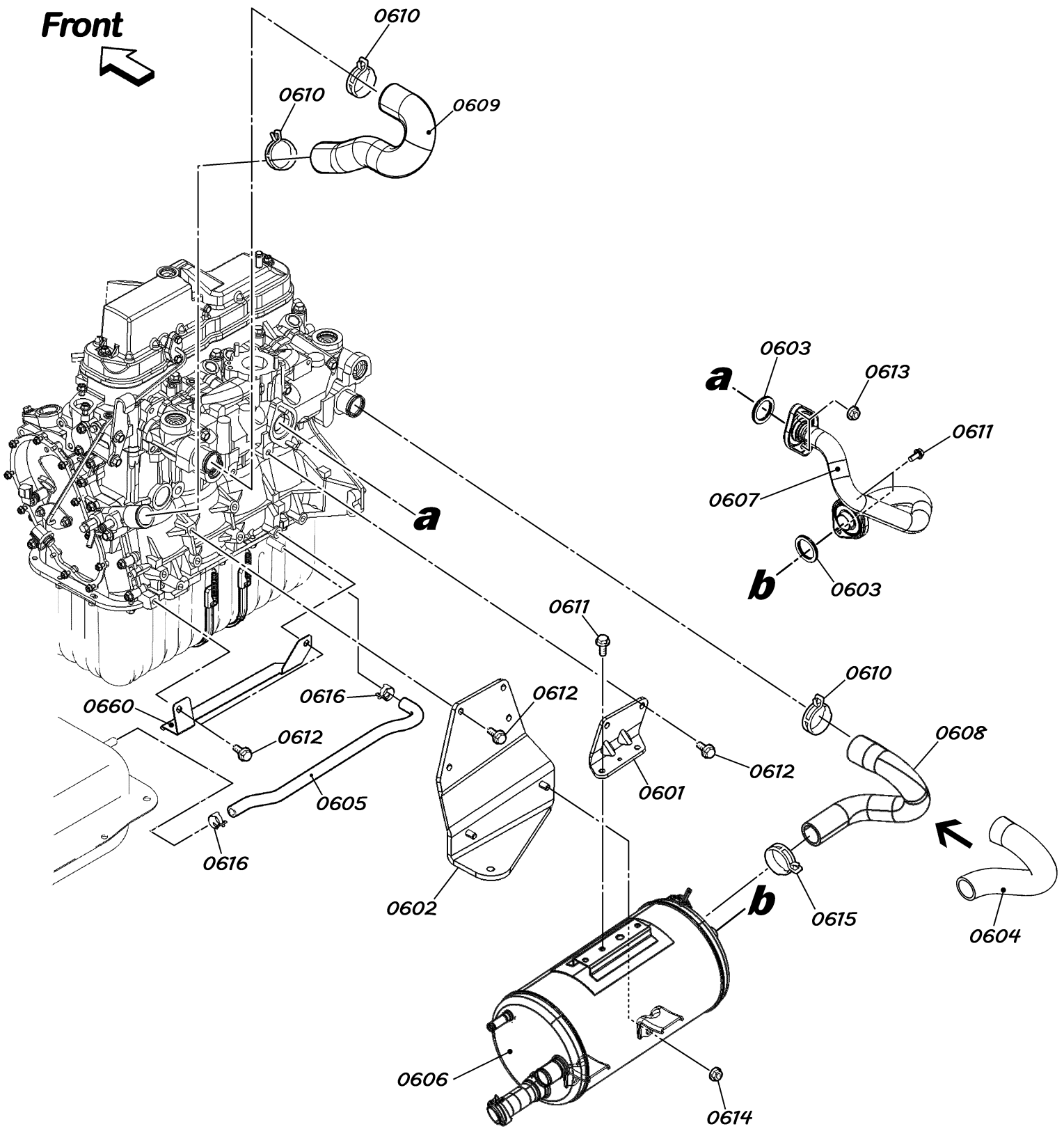


25HP



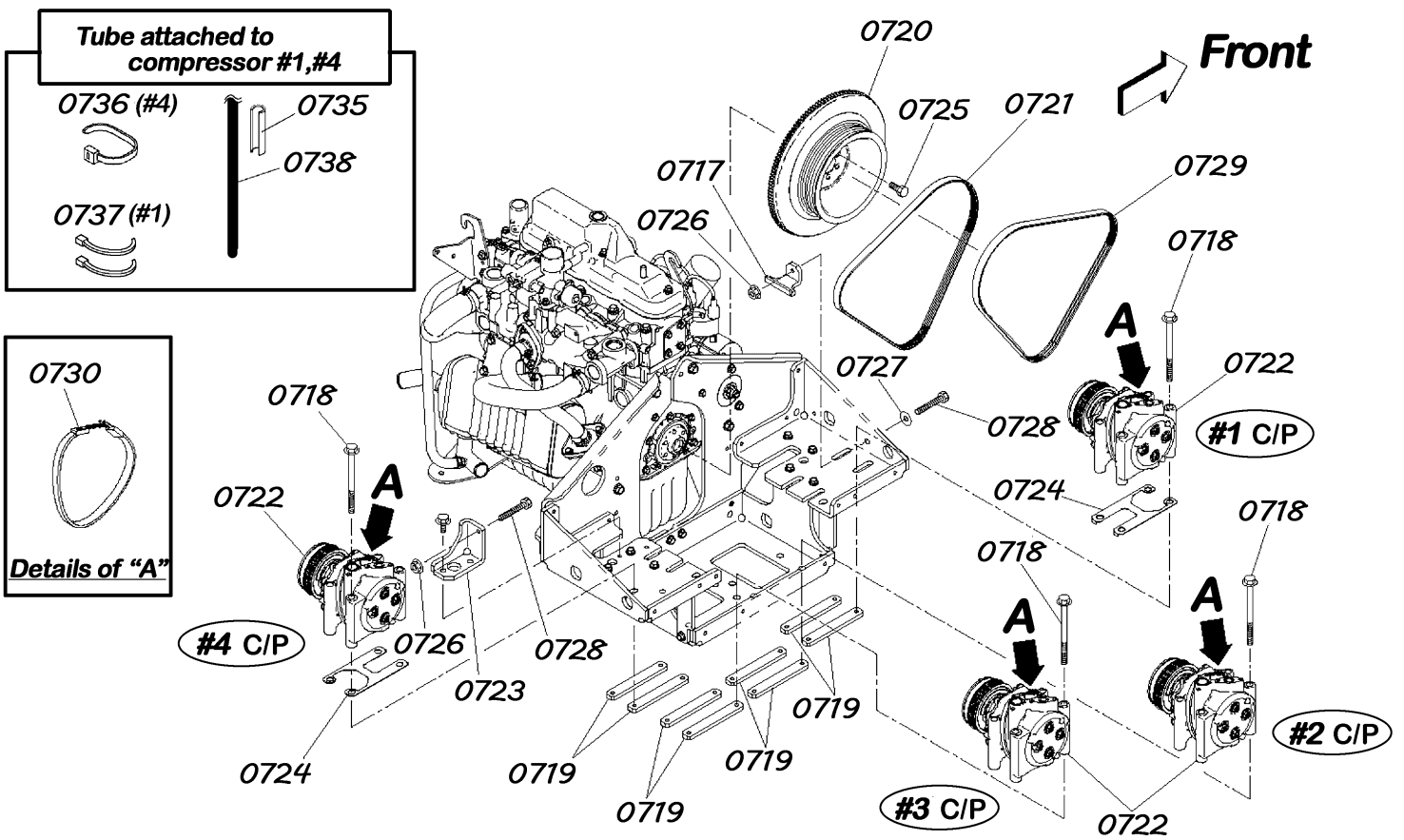
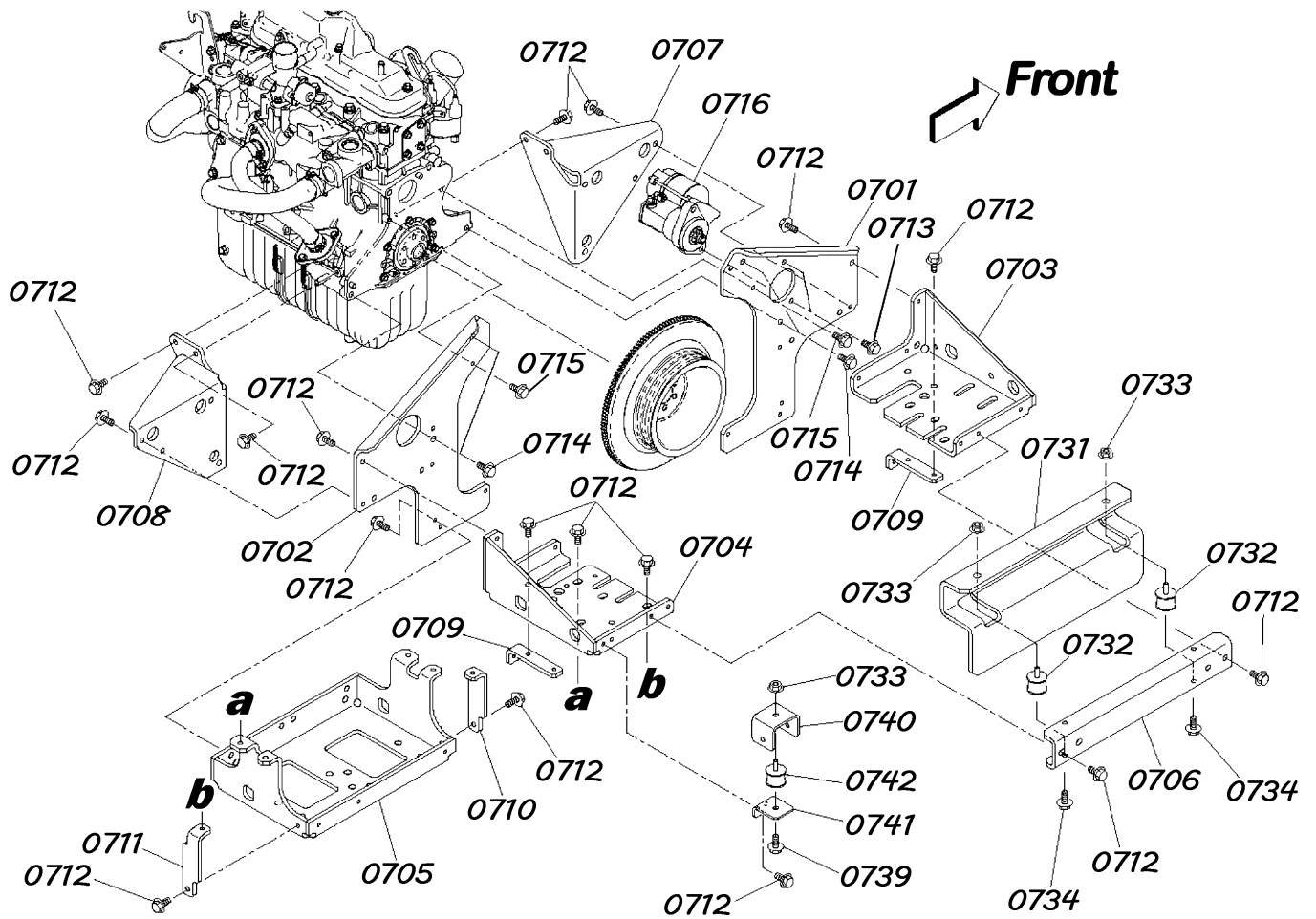
Front

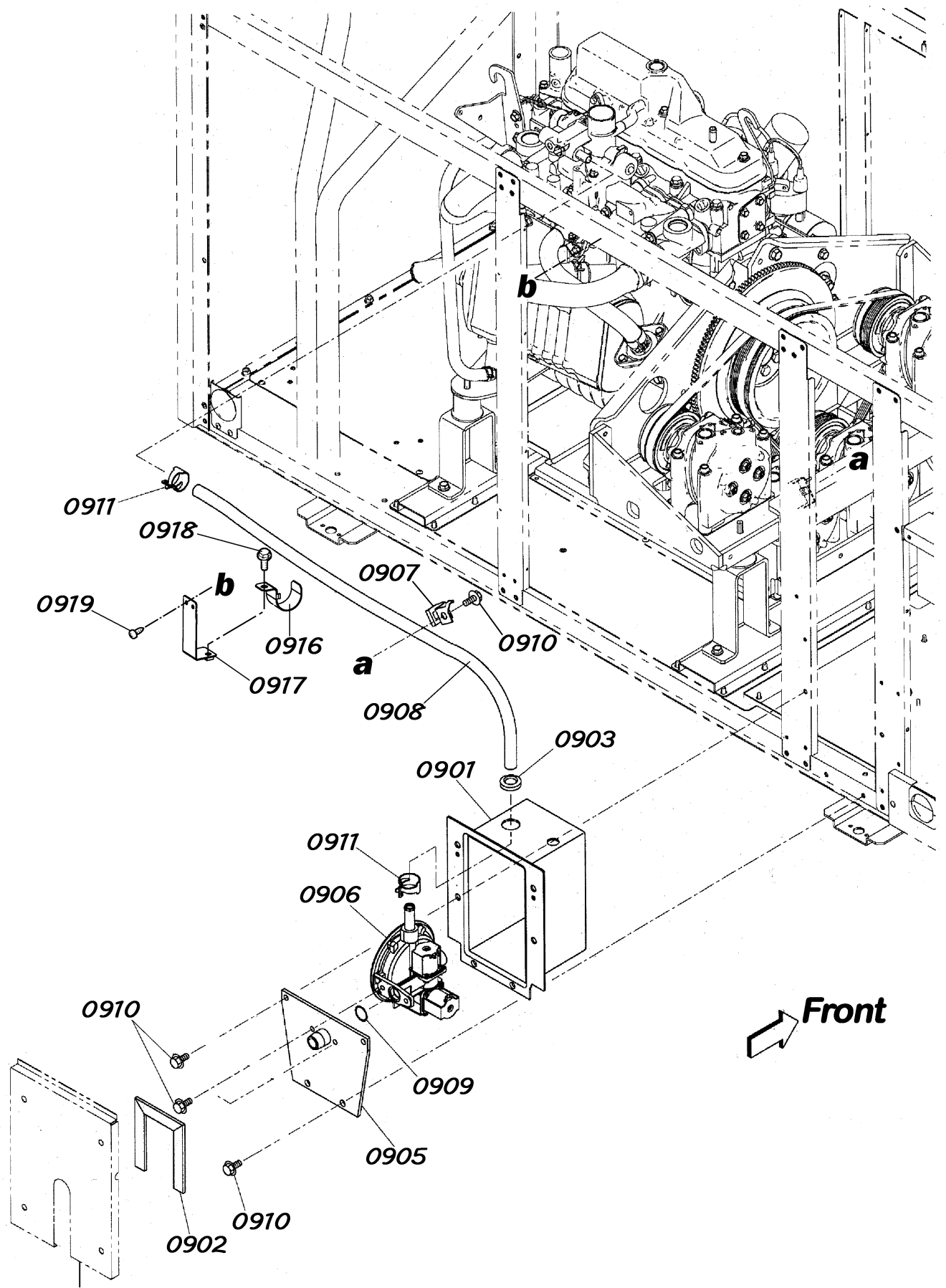


0617: Heat exchanger kit

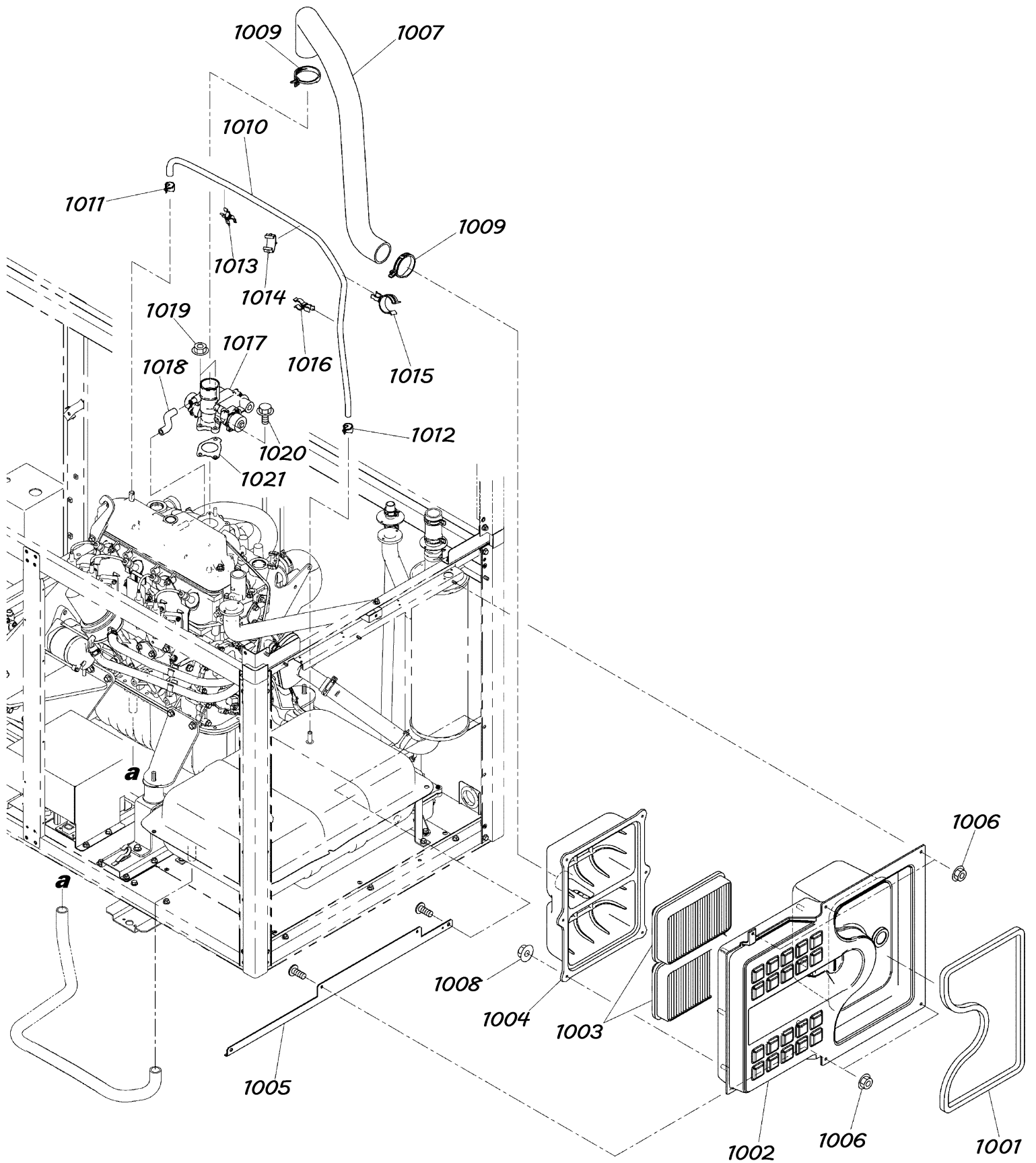
0618: Replacement parts kit

0619: Replacement parts kit (For cold region specification)





Panel, engine room (0216)

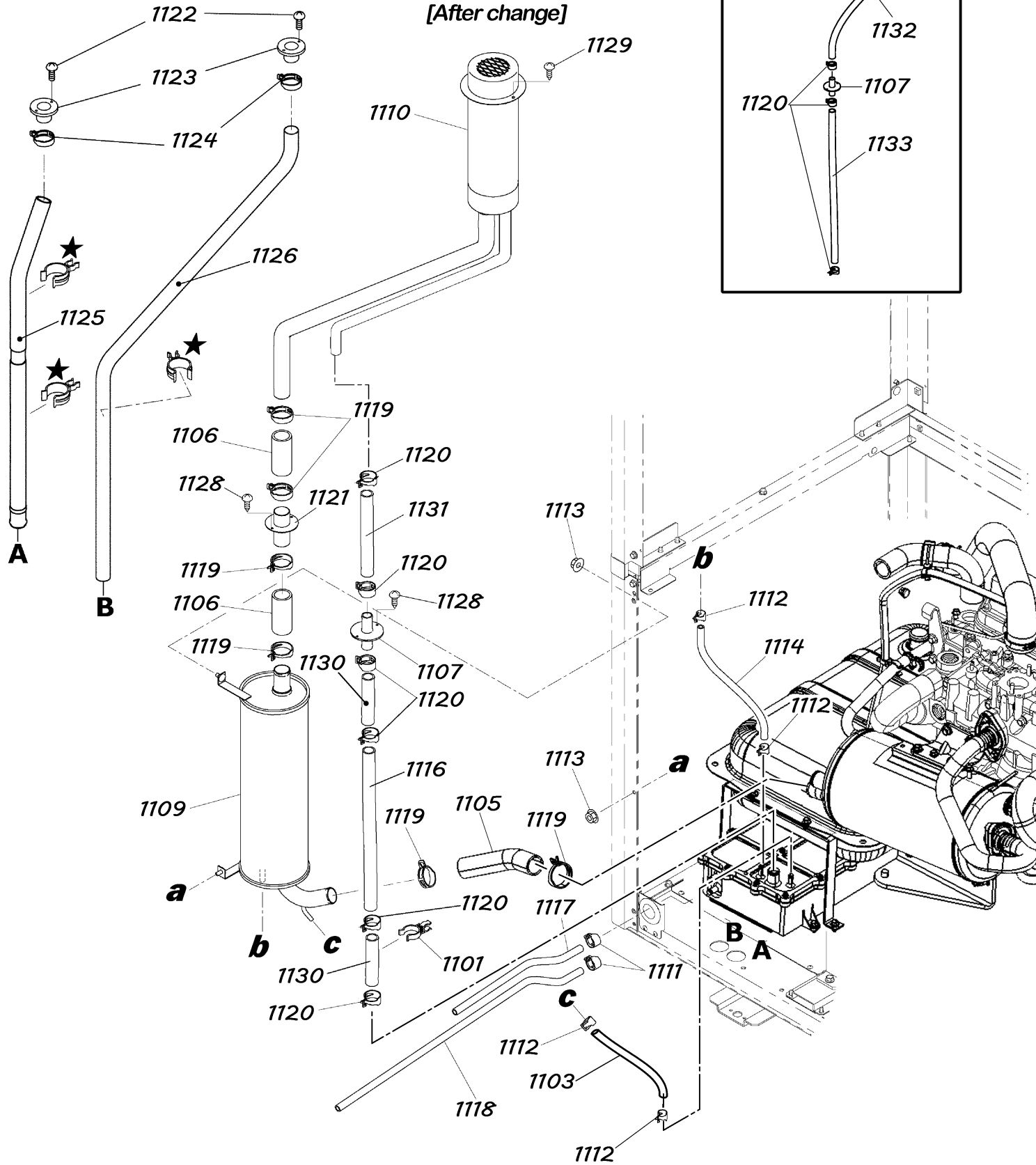
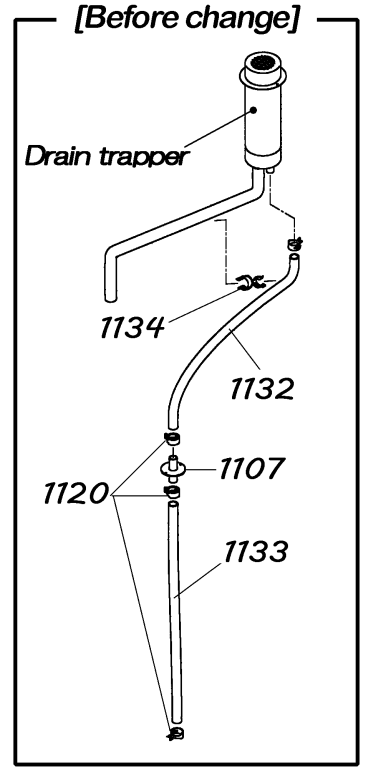


About the drain trapper

The mounting portion of the drain trapper has different components depending on the serial number. You will receive after change drain trapper even if its current shape is [Before change]. In the case, please cut the hose ((1132)) to adjust the length.

About the clamps with ★ mark

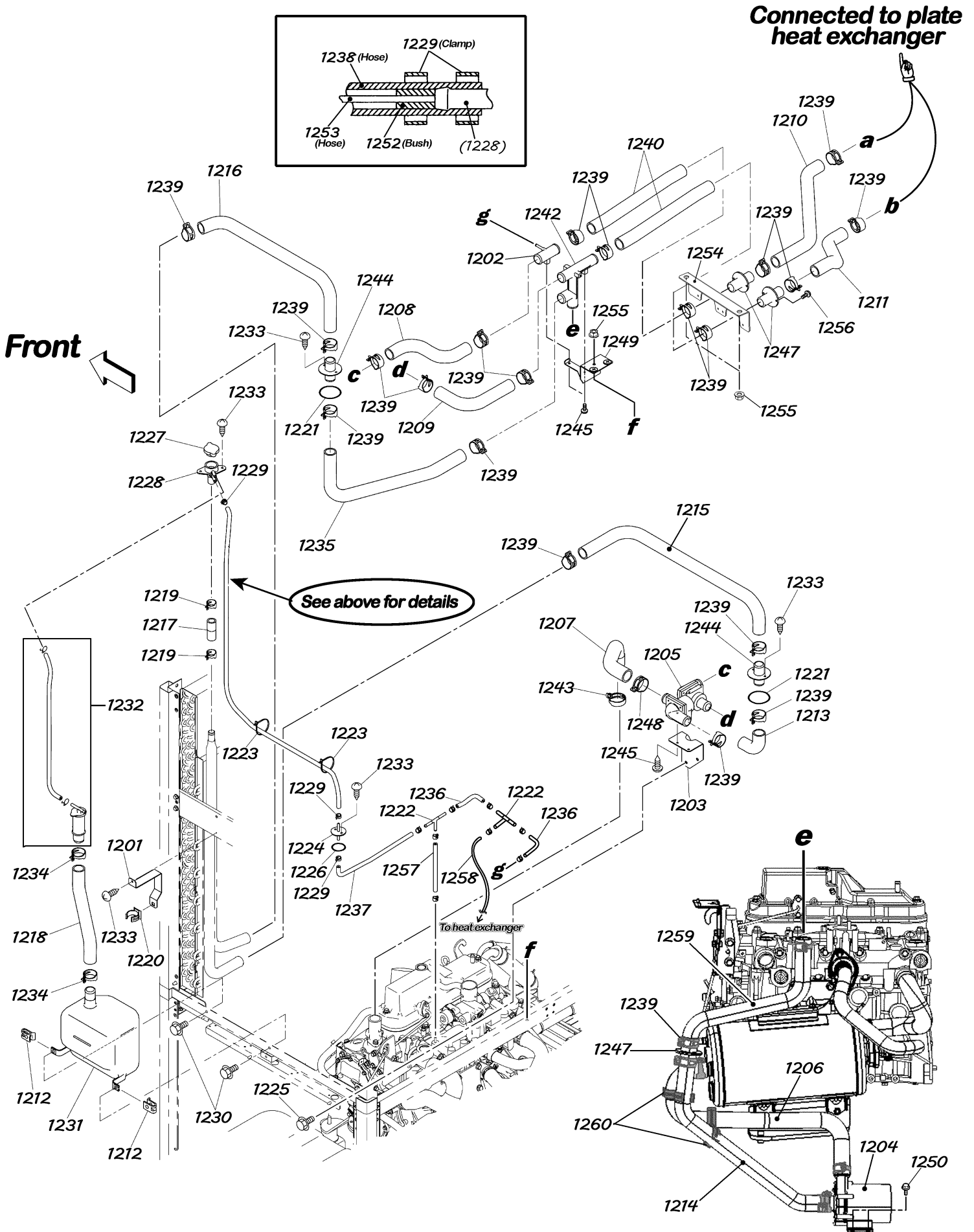
When the drain trapper is [Before change] → please order ((1135))
When the drain trapper is [After change] → please order ((1127))

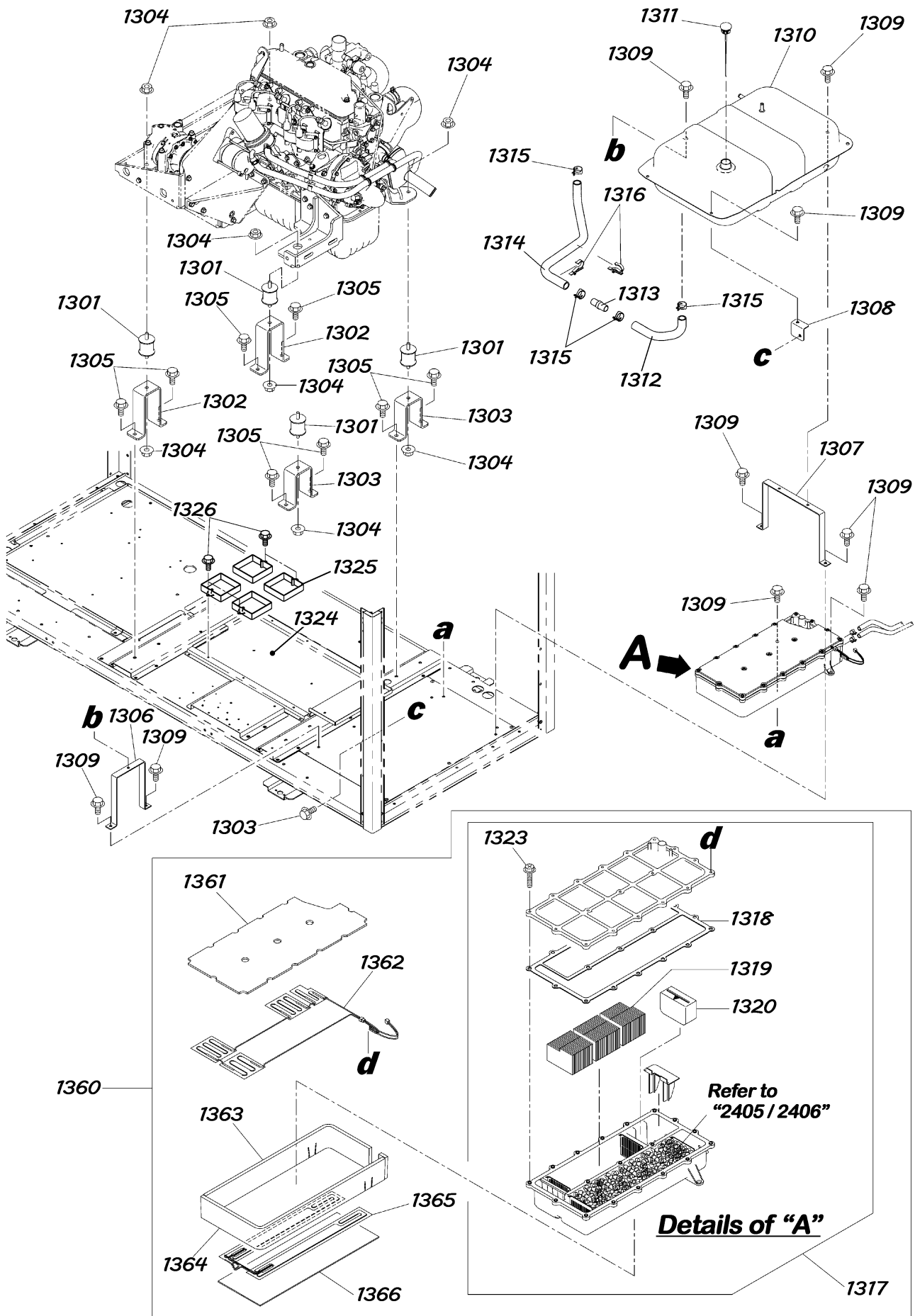


Model name	Serial number after change
AXGP450D1W	00100101~
AXGP450D1FW	
AXGP560D1W	
AXGP560D1FW	
AXGP710D1W	
AXGP710D1FW	

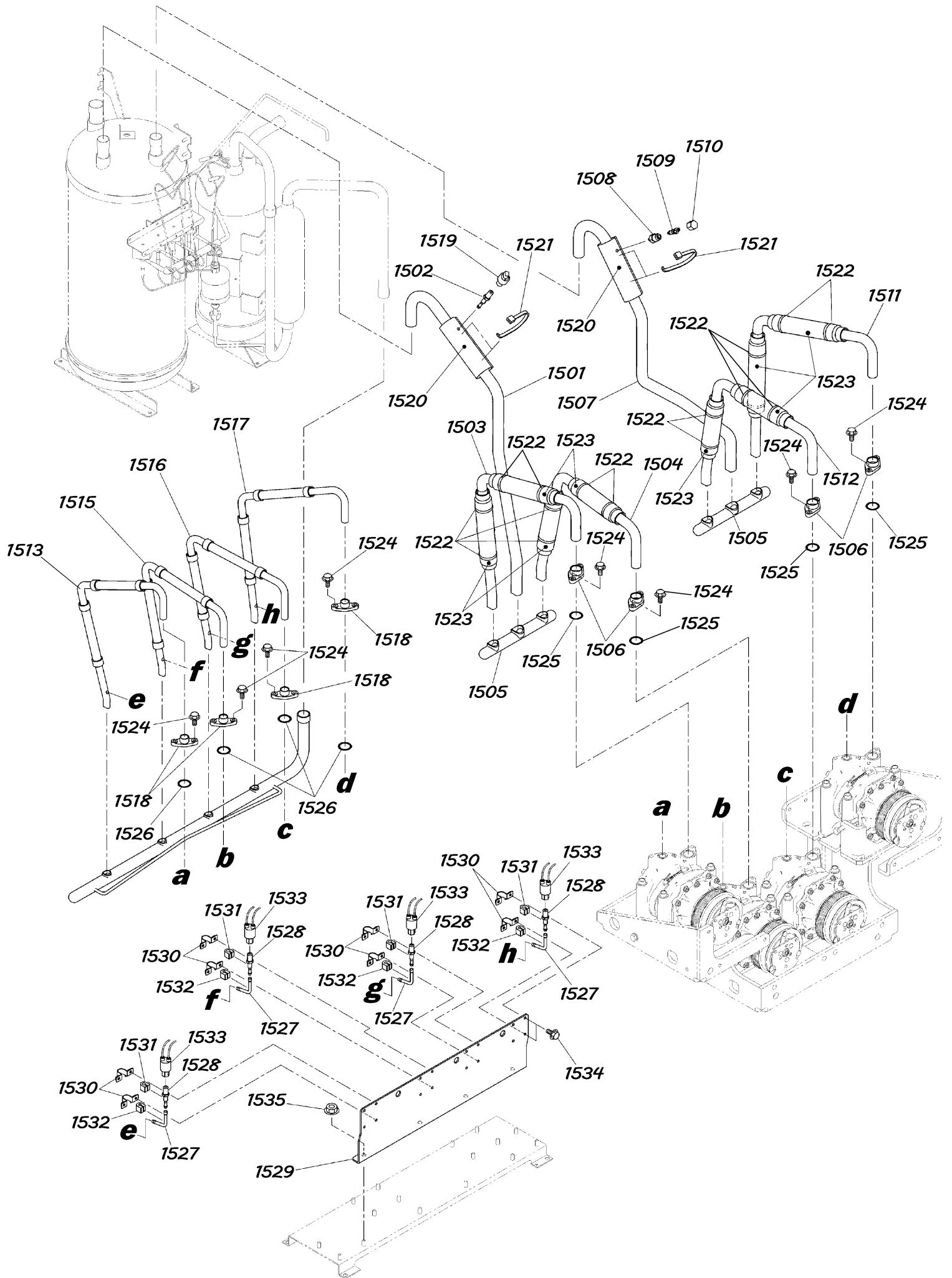
Model name	Serial number after change
AXGP450D1NR	00100154~
AXGP450D1NFR	
AXGP560D1NR	00100152~
AXGP560D1NFR	
AXGP710D1NR	00100154~
AXGP710D1NFR	

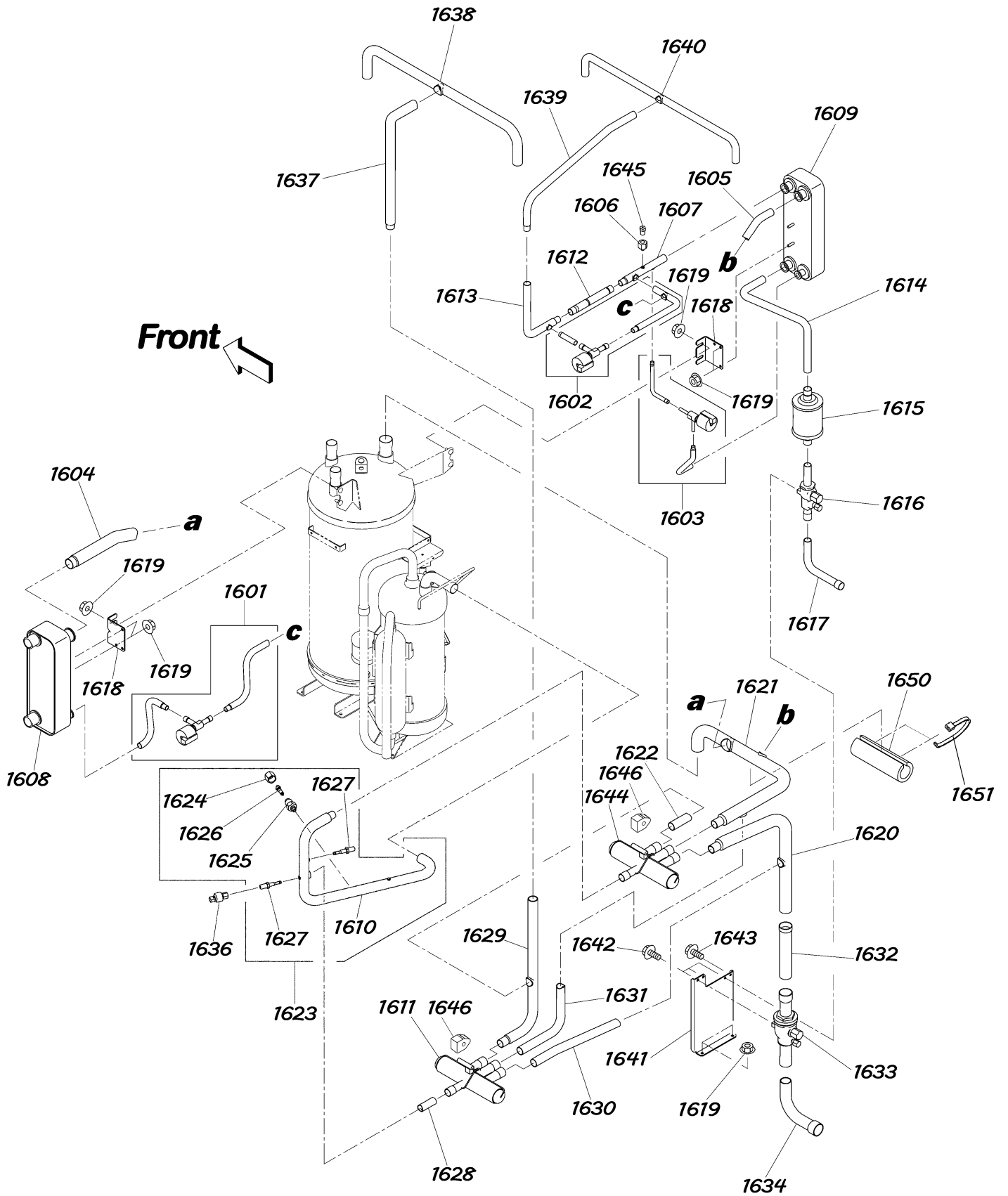
Model name	Serial number after change
TGMP450D1NR	All
TGMP560D1NR	
TGMP710D1NR	



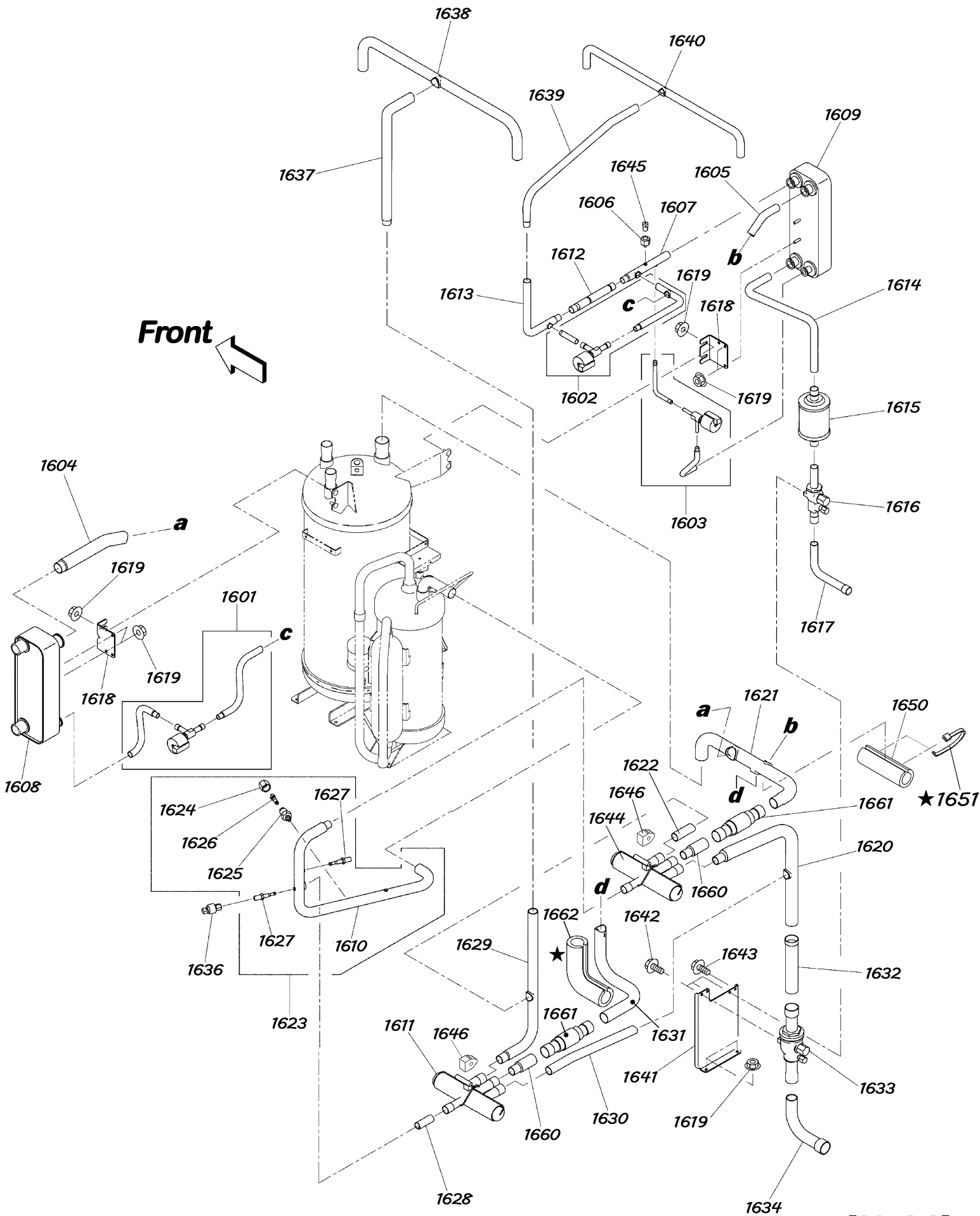


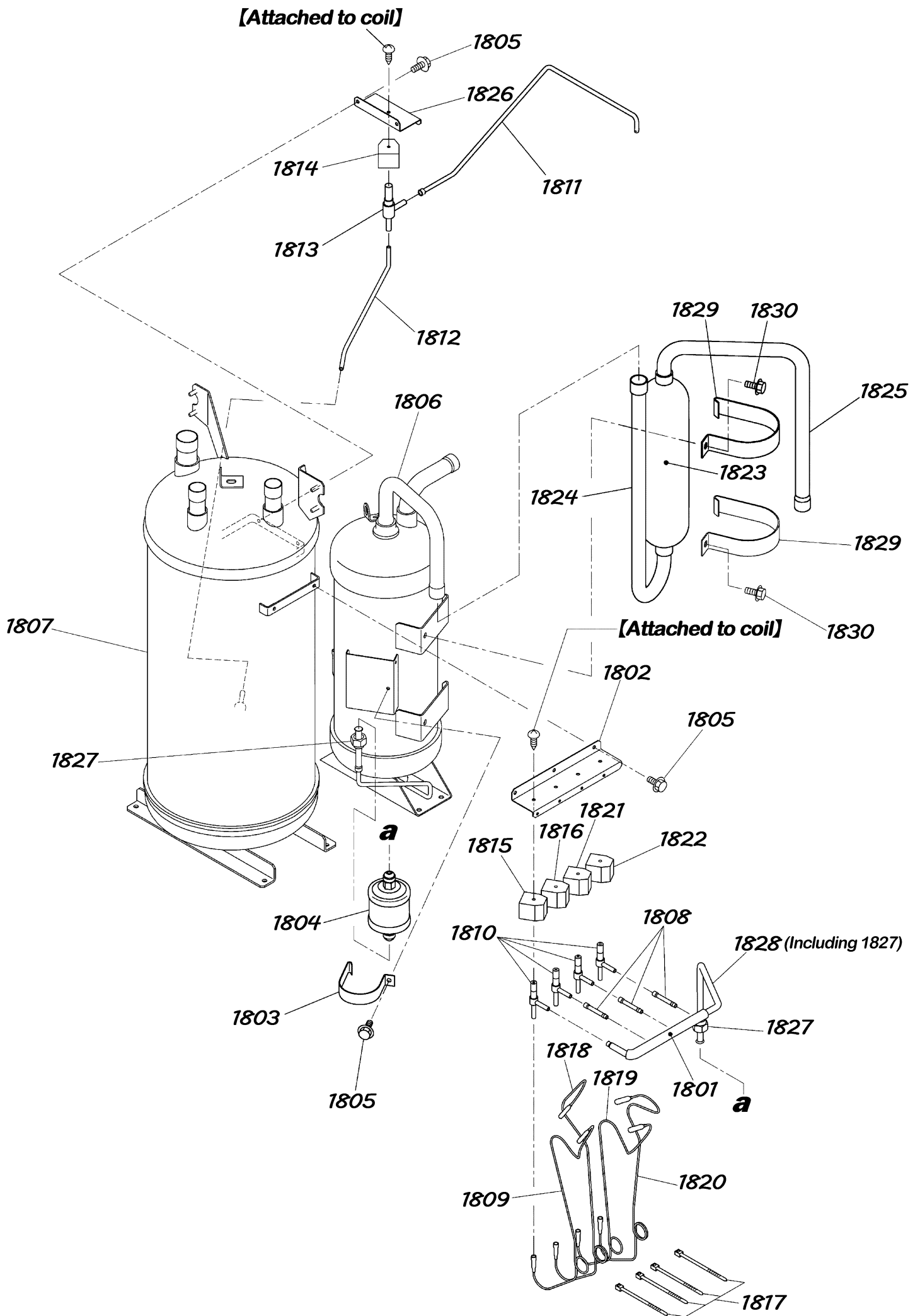
1360~1366 : Parts dedicated for cold region specification

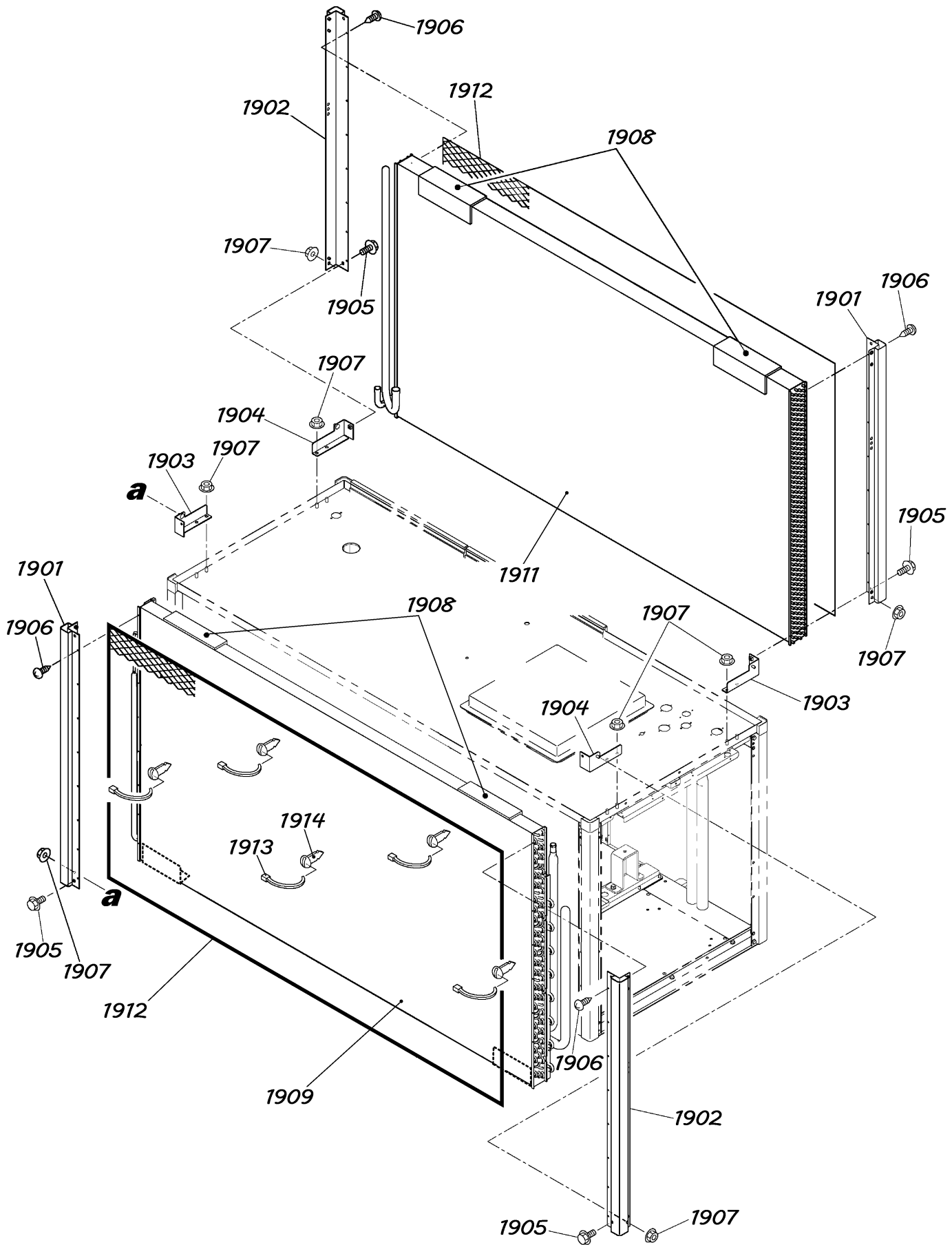


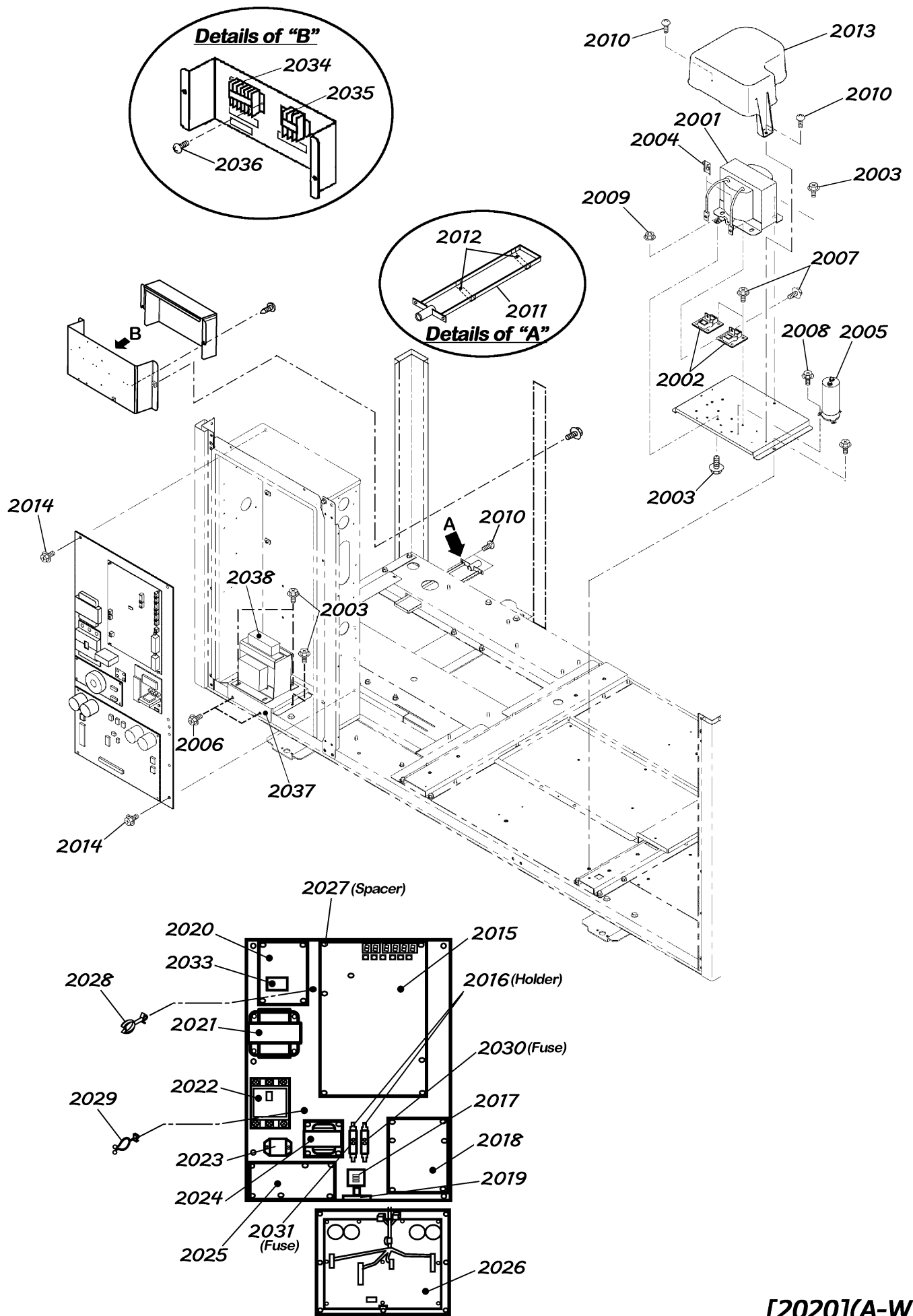


For cold region specification

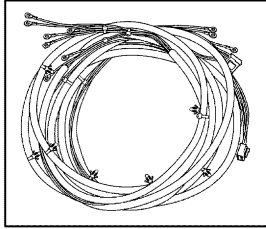




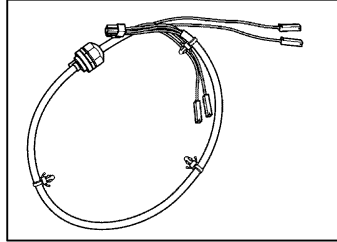




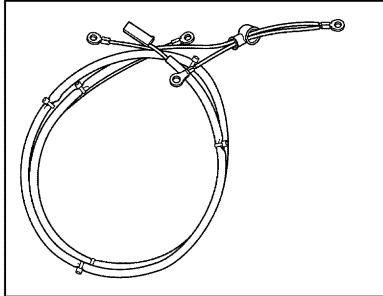
2101 : Communication wire



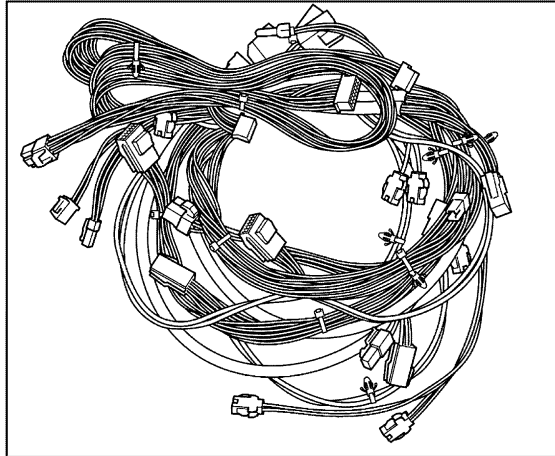
2102 : Gas valve wire



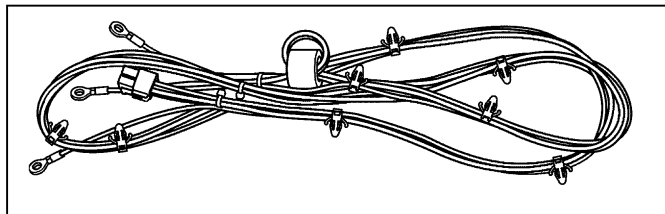
2103 : Transformer assy wire



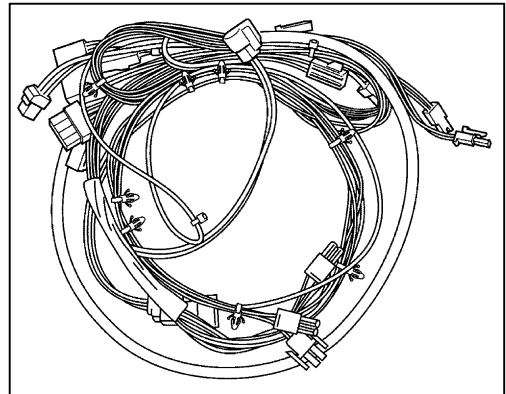
2104 : 12V



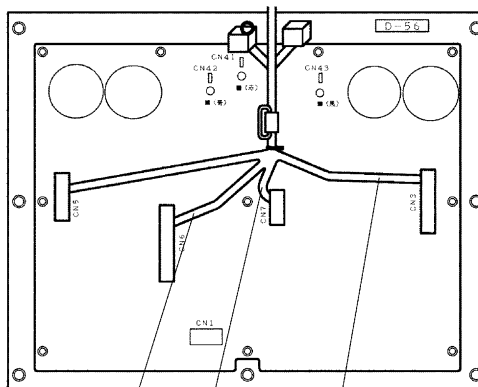
2105 : Power wire



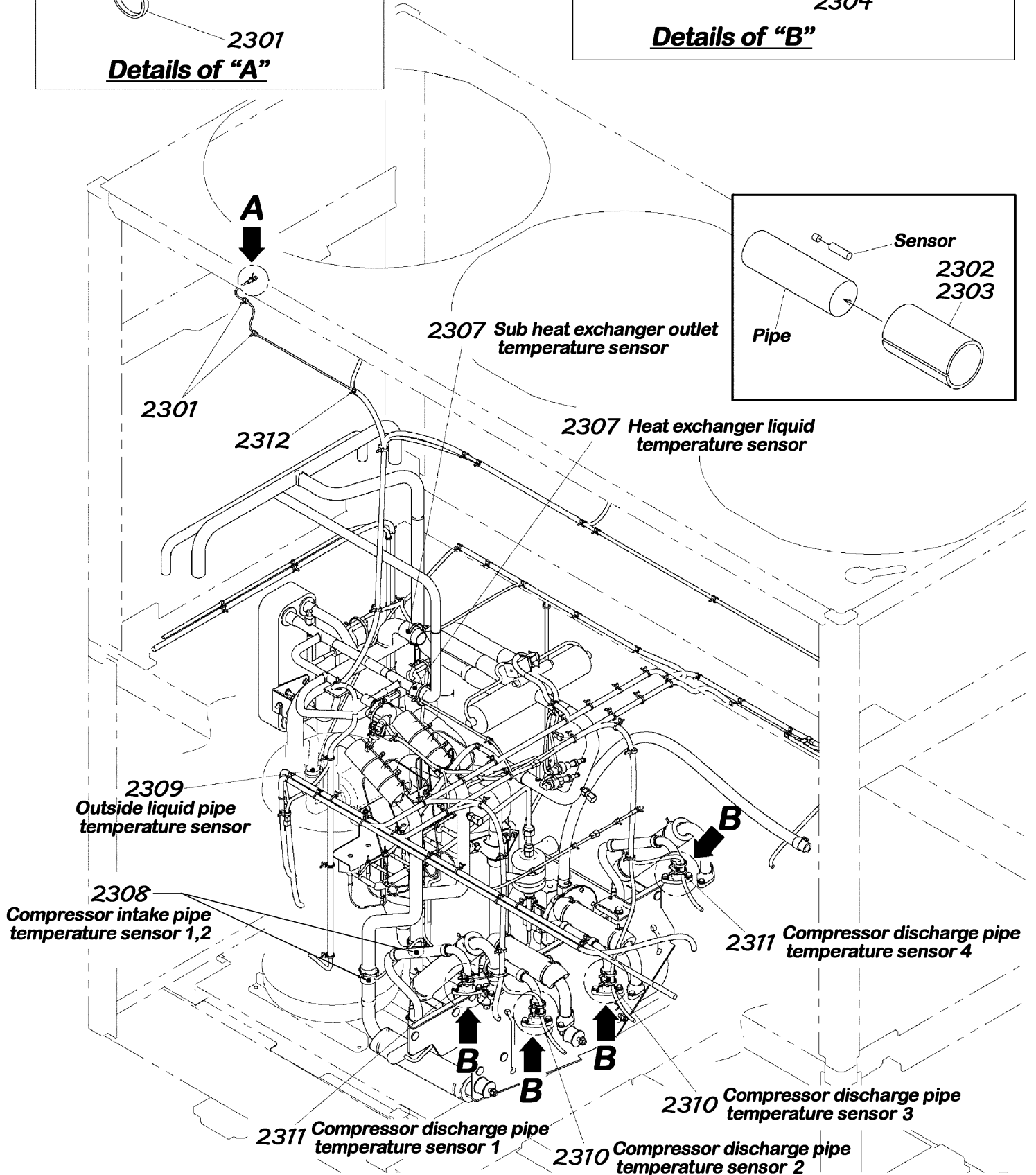
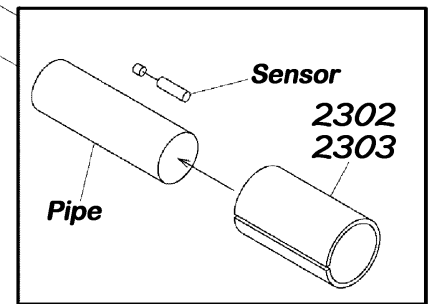
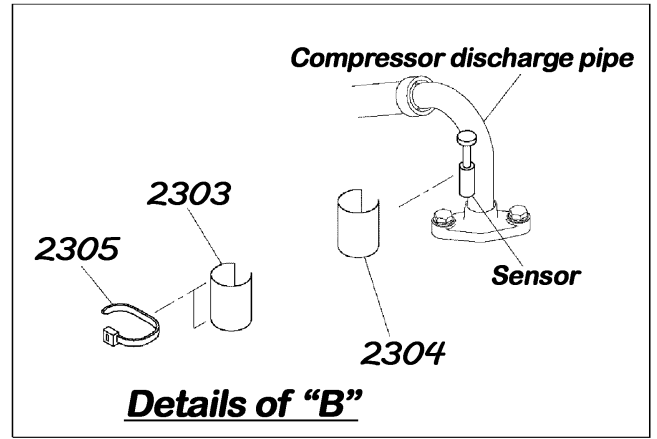
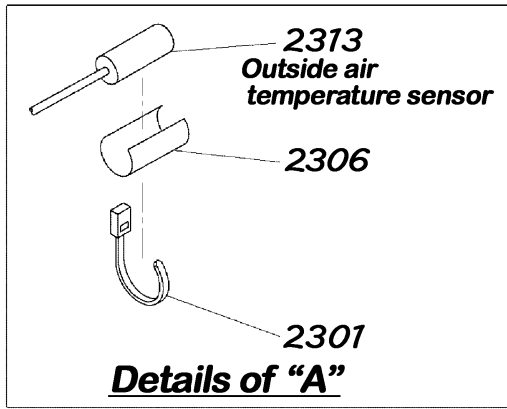
2106 : 200V



DCBL board

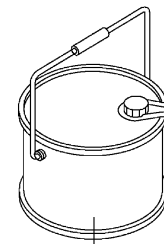
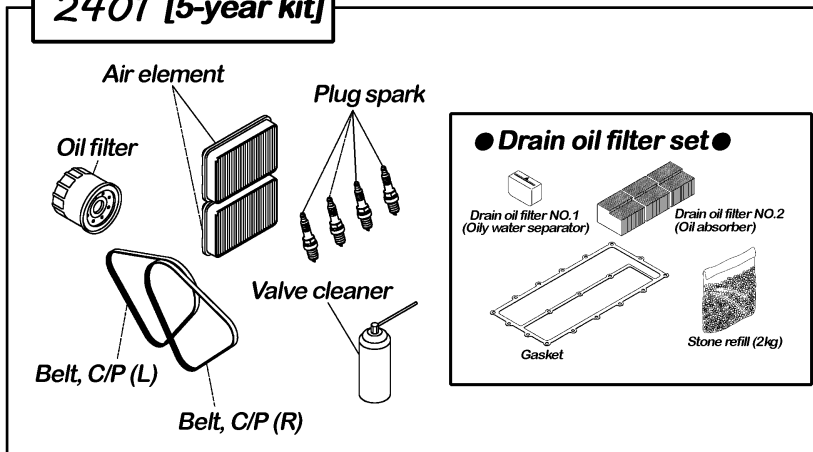


2107 2108 2109

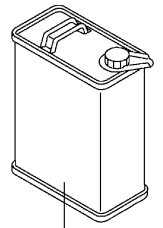


City gas & LPG

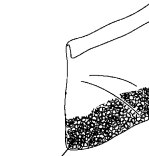
2401 [5-year kit]



2403 Engine oil



2404 Engine coolant

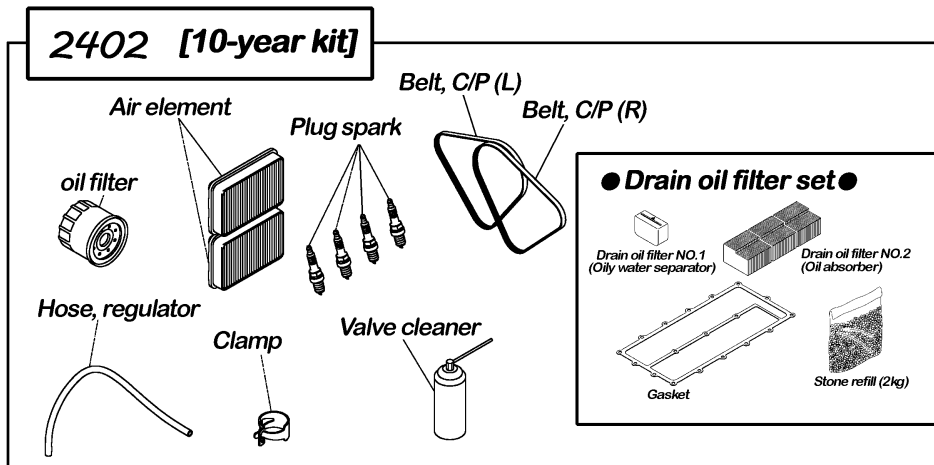


2405 Stone refill (1kg)

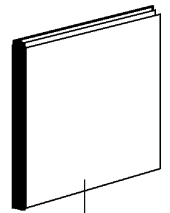


2406 Stone refill (2kg)

2402 [10-year kit]

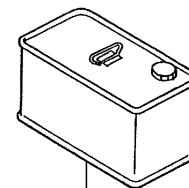
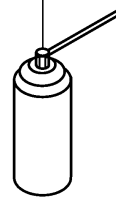


2407 Engine coolant additive



2408 Maintenance booklet

2411 Valve cleaner



2409 Refrigerant oil (2L)



2410 Refrigerant oil (0.5L)

Maintenance year	5	10	Part name	Part number	
Running hour	10000	20000			
●...Replacement △...Adjustment or Refilling ▲...Cleaning by valve cleaner	●	●	Oil filter	G3990-9740	1
	●	●	Air element	622419-30010	2
	●	●	Plug	622364-13020	4
	●	●	Compressor belt	622218-13010	2
	—	●	Fuel gas hose	G2451-7111	1
	—	●	Clamp	G9512-3111	2
	●	●	Drain oil filter set	622055-13010	1
	▲	▲	Valve cleaner	G0939-3110	1
	△	△	AISIN GHP oil L-10000G	622461-20010	17 ℓ
	△	△	AISIN coolant S (engine coolant)	G0954-3252	—
△	△	Stone refill for drain filter (1kg)	622585-10010	—	
△	△	Stone refill for drain filter (2kg)	G3242-9740	—	
△	△	Engine coolant additive (500ml)	622463-30010	460m ℓ	

200V 禁止
 ・この端子台は、番号欄用端子ですので電線は絶対に接続しないでください。

エンジンオイルはアイシン
 ガスエンジンオイル
 L-10000Gをオイル
 タンクのレベルゲージの
 Fレベルまで **補充** して
 下さい。
 ゲージ1目盛：約3L

内→外	外→外	監視線
F1 F2	F1 F2	+ -

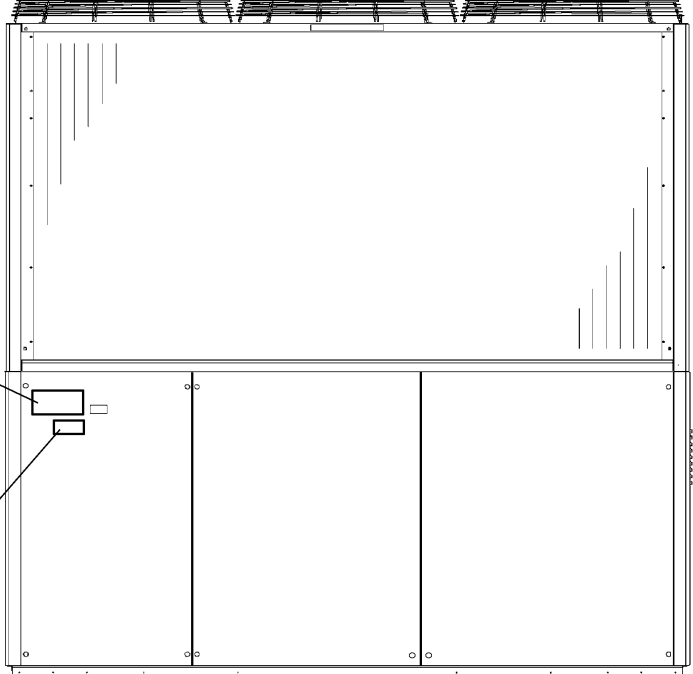
2506

△ 注意	△ 警告	△ 注意	△ 警告	△ 注意	△ 警告	△ 注意	△ 警告	△ 注意	△ 警告
ファン回転時、ケガの恐れあり。	ファン回転時、ケガの恐れあり。	ファン回転時、ケガの恐れあり。	ファン回転時、ケガの恐れあり。	ファン回転時、ケガの恐れあり。	ファン回転時、ケガの恐れあり。	ファン回転時、ケガの恐れあり。	ファン回転時、ケガの恐れあり。	ファン回転時、ケガの恐れあり。	ファン回転時、ケガの恐れあり。
排気口に熱い。火傷の恐れあり。	排気口に熱い。火傷の恐れあり。	排気口に熱い。火傷の恐れあり。	排気口に熱い。火傷の恐れあり。	排気口に熱い。火傷の恐れあり。	排気口に熱い。火傷の恐れあり。	排気口に熱い。火傷の恐れあり。	排気口に熱い。火傷の恐れあり。	排気口に熱い。火傷の恐れあり。	排気口に熱い。火傷の恐れあり。

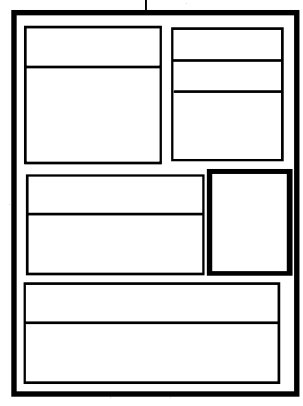
2507

2501

2502

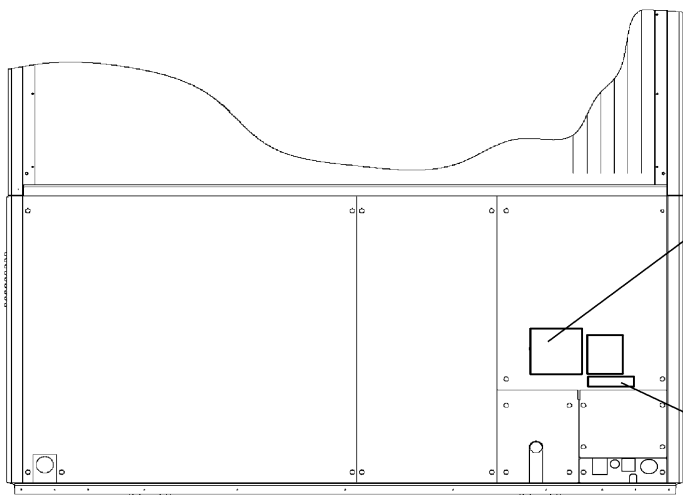


2504



Details of "Plate, caution" attachment

2503



NO 230V

For signal wire only
Never connect power wire with this terminal.

CAUTION
Before disengaging the inverter, for one minute or more always after stopping the system.

Use AISIN gas engine oil L-10000G only.
Add the engine oil into the oil sump up to F level of the gauge.
One gauge: Approx. 3L

In-Cut	Out-Cut	Neutral wire
F1	F2	F1 F2 + -

Electrical wire

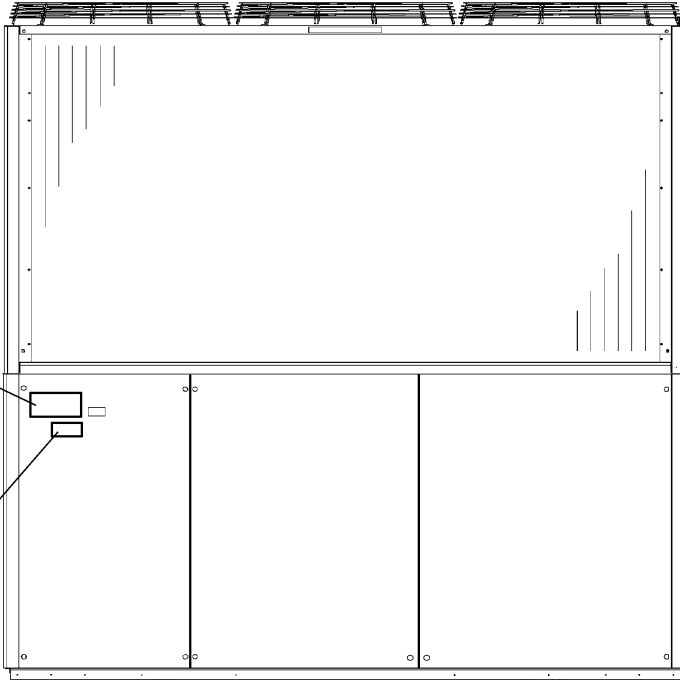
2506

CAUTION Risk of burn injury. Do not touch moving parts.	WARNING Risk of electric shock. Turn off all inverter before the installation. Confirm the residual voltage is less than 10V before installation.	CAUTION Risk of electric shock. Do not touch moving parts.	WARNING Risk of electric shock. Do not touch moving parts.	WARNING When handling the refrigerant gas, wear the protective gear to prevent damage to the environment.	WARNING Fan in movement. Do not insert fingers, sticks, poles, or etc.	CAUTION Hot surface may result in burn injury. Do not touch the exhaust gas outlet.
WARNING Risk of serious injury. Do not touch moving parts.	WARNING Risk of serious injury. Do not touch moving parts.	WARNING Risk of electric shock. Do not touch moving parts.	WARNING Risk of electric shock. Do not touch moving parts.	WARNING When handling the refrigerant gas, wear the protective gear to prevent damage to the environment.	WARNING Fan in movement. Do not insert fingers, sticks, poles, or etc.	CAUTION Hot surface may result in burn injury. Do not touch the exhaust gas outlet.

2507

2501

2502



2504

Recovery and destructive law of Free First class specialized specific products

The product uses R22 as a refrigerant.
1) Indiscriminate introduction of R22 emission into the atmosphere is prohibited.
2) R22 recovery is required before disposing the product. (Comply with current norms)
3) The type and quantity of the R22 gas released on the "Recovery done for installation and inspection" label inside the control box panel.

WARNING

1) Risk of release of gas pollution accumulated indoors.
-Check hose of indoor and outdoor units should not be connected to the same drainage pipe.
-Discharge the exhaust heat in the open space outdoors.
2) Possibility of gas poisoning due to engine exhaust gas.
-Connect the engine's exhaust gas directly to open outdoor space.
3) Danger of gas leakage.
-Use only specific and qualified pipe and flexible hoses for fuel gas.
4) Danger of refrigerant leakage indoors or cold radiation due to possible refrigerant leakage.
-After installation, perform pressure test to the piping network, to detect any refrigerant gas leakage.

CAUTION

Drainage holes: possibly bend the concrete surface or damage the water proof sheet of the roof or floor.
Extend the drainage to the gutter or drain of the roof.

824/01-02000

Details of "Plate, caution" attachment

2503

